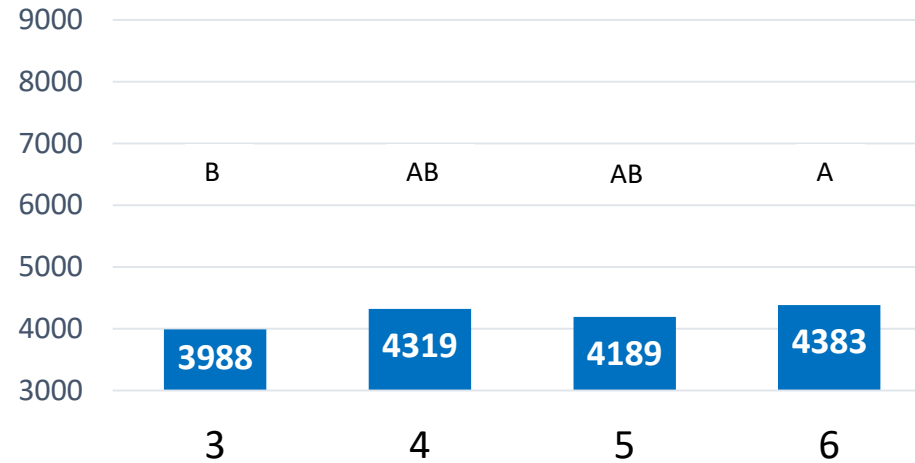
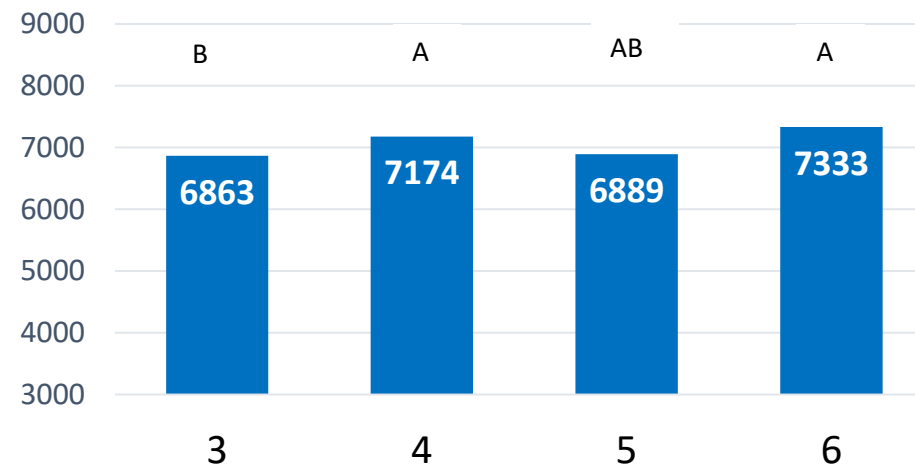


Yield (lb/A) by seeding rate in 2016



Yield increased when seeding rate increased

Yield (lb/A) by seeding rate in 2017



Variety	Seeding Rate (Seeds ft ⁻¹)	lb. seed ac ⁻¹	Seed cost ac ⁻¹ (\$)	Total cost ac ⁻¹ (\$)	Cost difference ac ⁻¹ (\$)	Return ac ⁻¹ (\$)	Return difference ac ⁻¹ (\$)	Seeding Rate Economic Return (\$)
Bailey	3	73	0.85	62	-	768	-	-
	4	97	0.85	82	20	837	69	49
	6	135	0.85	115	53	796	28	-25
Sullivan	3	76	0.85	65	-	671	-	-
	4	101	0.85	86	21	687	16	-5
	6	141	0.85	120	55	764	93	38
Wynne	3	87	0.85	74	-	557	-	-
	4	116	0.85	99	25	633	76	51
	6	162	0.85	138	64	650	93	29
Total								23

Economic return, in general, increased with increasing seeding rate, on average of 23 dollars per acre in 2016.

In a good peanut year (2017), the average economic return was even higher, 55 dollars per acre.

Variety	Seeding Rate (Seeds ft ⁻¹)	lb. seed ac ⁻¹	Seed cost ac ⁻¹ (\$)	Total cost ac ⁻¹ (\$)	Cost difference ac ⁻¹ (\$)	Return ac ⁻¹ (\$)	Return difference ac ⁻¹ (\$)	Seeding Rate Economic Return (\$)
Bailey	3	73	0.85	62	-	1260	-	-
	4	97	0.85	82	20	1312	52	32
	6	135	0.85	115	53	1350	90	37
Sullivan	3	76	0.85	65	-	1158	-	-
	4	101	0.85	86	21	1264	106	85
	6	141	0.85	120	55	1309	151	96
Wynne	3	87	0.85	74	-	1162	-	-
	4	116	0.85	99	25	1213	51	26
	6	162	0.85	138	64	1294	132	68
Emery	3	76	0.85	65	-	1269	-	-
	4	109	0.85	93	28	1365	96	68
	6	152	0.85	129	65	1360	91	26
Total								55