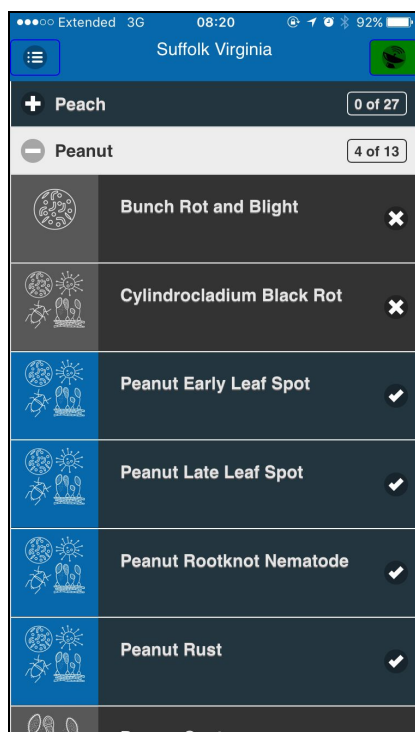


## Benefits of Using the iPiPE App and Website

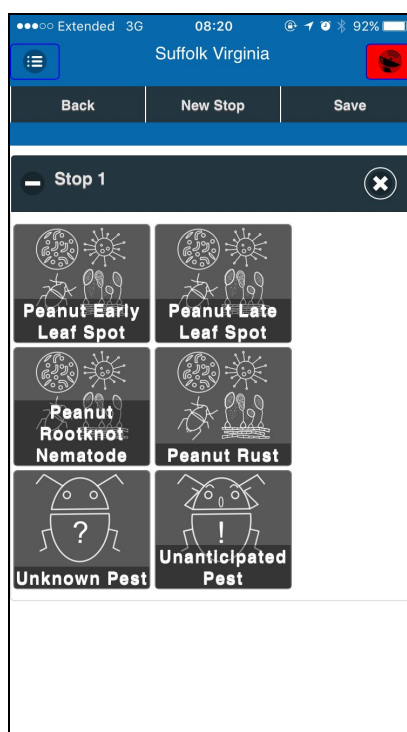
If you choose to become a participant in iPiPE, then you will have access to the map where you can filter out other grower's or consultant's observations of the pest you are interested in and see which counties are infected. You can also overlay disease models on these maps too see what the risk is for diseases in your area and schedule customized summaries, maps, and pest alerts on your computer or mobile device if you do not want to make the maps yourself.

## iPiPE Lite App User Guide

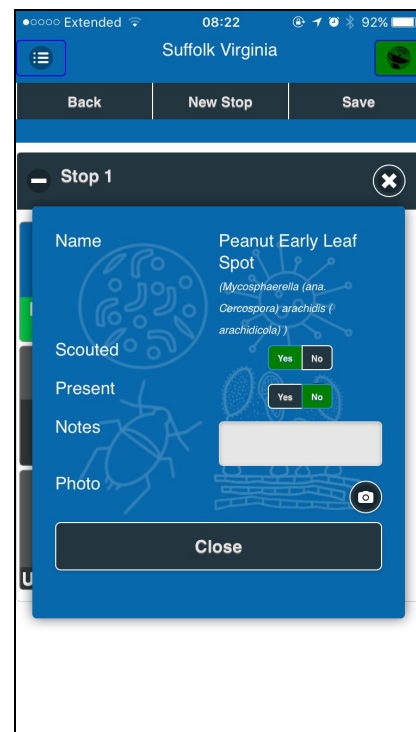
1. If not already, download the iPiPE Lite app and request an account.
2. First, you must set your preferences. You can do this by going to the drop down menu in the left hand corner and select preferences.
3. Select the the crop and diseases/pests you are interested in monitoring. For example, under the peanut icon select late leaf spot, Sclerotinia blight, and southern stem rot.
4. To view the crop you have selected, go to back to the drop down menu and select scouter.
5. Expand the the peanut icon and then select which pest or disease has been seen for Stop 1.
6. Once the pest has been selected, a pop up menu will appear and you can select yes if the pest was present and no if it was not. (There is also an area for notes and a photo if you would like to add those.) Select the close button when you are finished entering data.
7. If you are making more than one stop, you can select "New Stop" to update the GPS Location.
8. Once all data is entered for a stop, you should press the save button to make sure the data collected has been saved.
9. It is important to sync the data collected often. This will send the information to the iPiPE website.



Step 3



Step 5



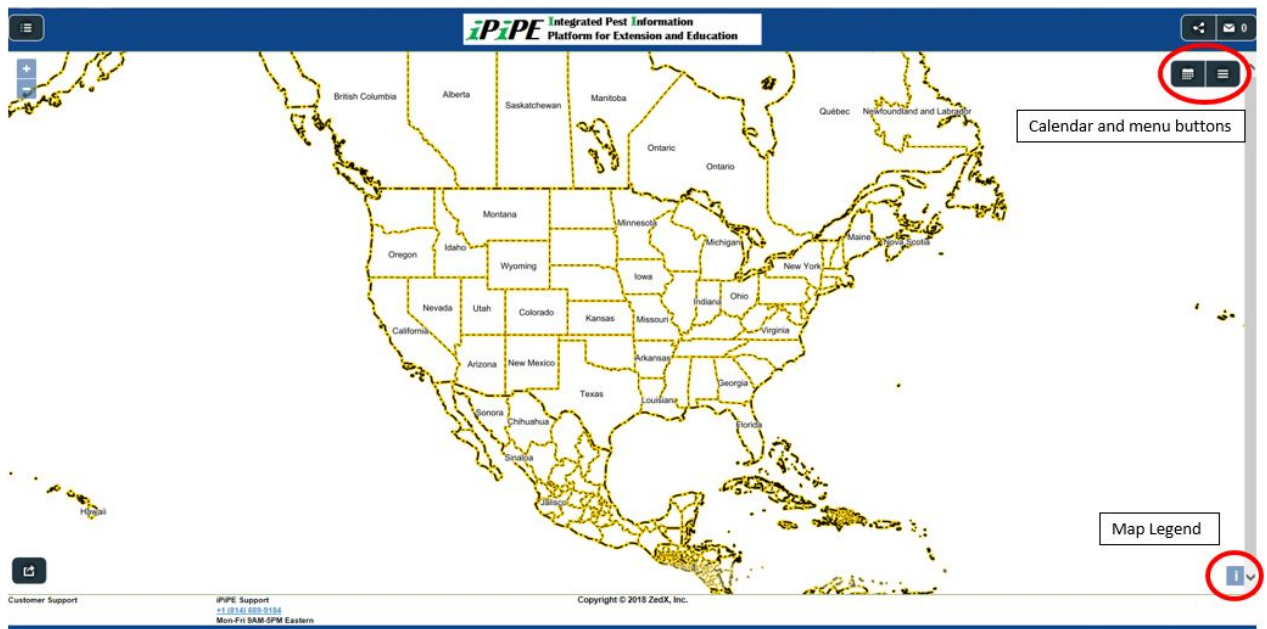
Step 6

## iPIPE Website User Guide

1. Go to [ipipe.org](http://ipipe.org).
2. Click on the participant website link and login or register, if you do not already have an account.

### To View the Map:

1. Click on the mapmaker link in the drop down menu in the top left corner and then select maps and model.
2. First you are going to want to select the dates you want to view by using the calendar button in the top right corner of the map.
3. Next, you will want to click the button next to the calendar button. (This button looks like a circle with 3 horizontal lines)
4. Here, you will want to click the filters button, which will drop down and a search bar. You can search for any peanut disease you are looking for and select it.
5. Once you select the pest or disease you would like to look at, this should update the map to show where the disease/pest is affecting.
6. If you close the menu (pressing the button with the 3 horizontal lines again) then you can click an "i" button in the bottom right corner of the map. This will give you a legend for the colors on your map.



QUESTIONS? Contact Dr. Hillary L. Mehl at the Virginia Tech Tidewater AREC ([hlmehl@vt.edu](mailto:hlmehl@vt.edu)).